

WILDLIFE HABITAT WITH A VIEW

This 417-acre nature preserve is one of the largest remaining forests in Polk Township, offering a wooded sanctuary in the midst of numerous housing developments. The area provides habitat for four “species of special concern” in Pennsylvania and approximately 160 bird species. It also offers cover and forage for deer, bear, and many smaller mammals.

A short distance from the parking lot, a powerline clearing presents beautiful views of Blue Mountain. The brushy growth in the clearing provides nesting and foraging areas for field sparrows, prairie warblers, and other birds that are in decline as this type of habitat becomes scarcer in our region.



View from Jonas Mountain

Ray Roper photo

NATIVE LANDS

Portions of this property, especially the area near the top of Jonas Mountain known as the “grassy knoll,” are sacred to the Lenape people. Certain rock formations on this land are said to resemble animals, and many artifacts have been found in the vicinity.

COOL, CLEAN WATER

Jonas Mountain Preserve boasts a number of coldwater springs that form the headwaters of Jonas Creek, a Class A wild trout stream that is a tributary of Pohopoco Creek and the Lehigh River. A number of trails meander through beautiful thickets of rhododendron along the flowing streams, and a rustic bridge spans Jonas Creek.



Jonas Creek

Ray Roper photo



Pocono Heritage Land Trust

1539 Cherry Lane Road

East Stroudsburg, PA 18301

www.phlt.org; 570-424-1514

Founded in 1984, Pocono Heritage Land Trust is a non-profit organization dedicated to protecting the natural heritage of the Pocono Mountains region by conserving land and inspiring people to care for, enjoy, and explore their natural world.



Jonas Mountain Nature Preserve



Ray Roper photo

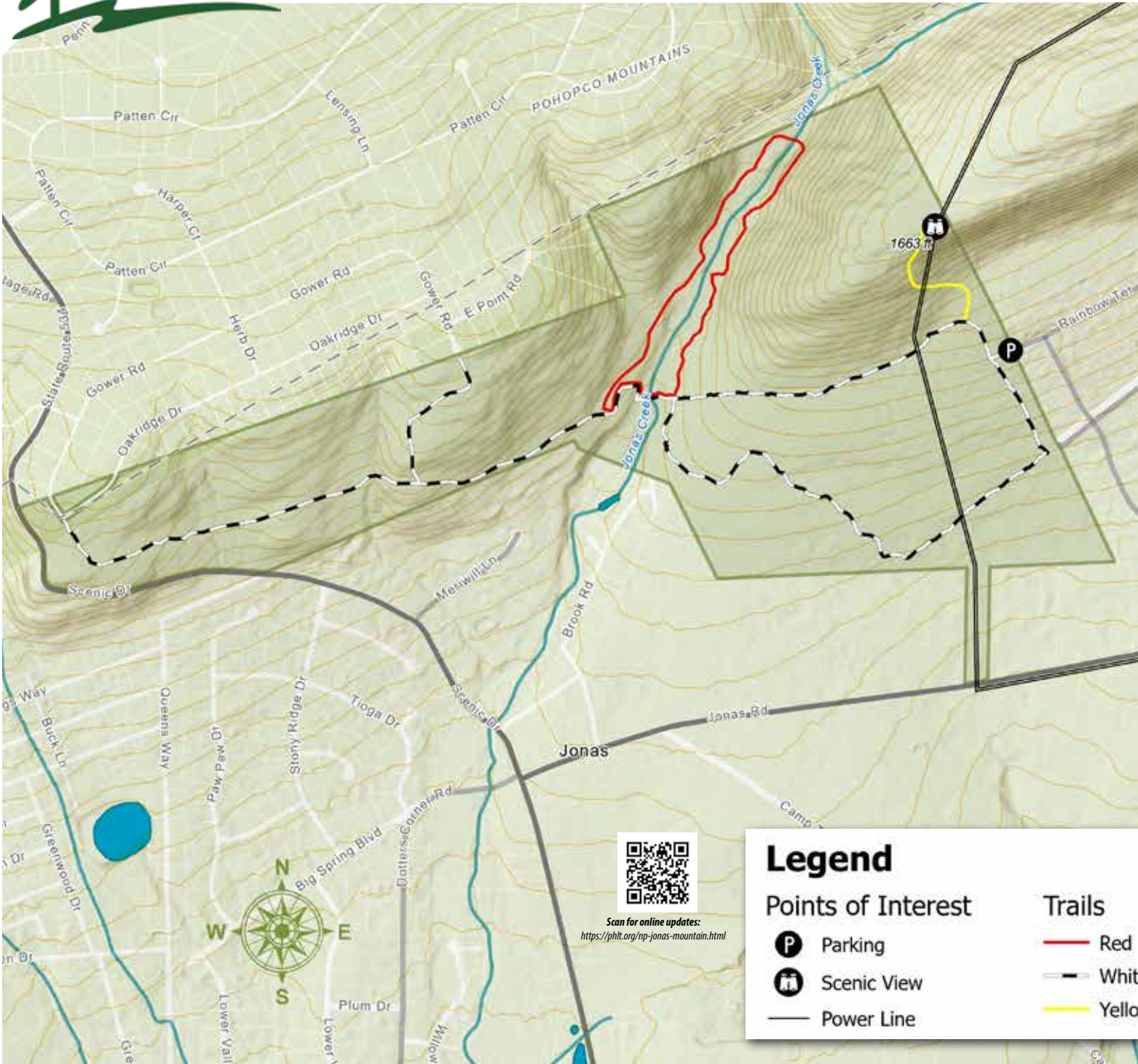
Rhododendra line the path at Jonas Mountain Nature Preserve.

THINGS TO DO HERE

Hiking, birdwatching, hunting

This brochure made possible by a generous grant from 1 for Nature: 1forNature.org

Jonas Mountain Nature Preserve



WHITE TRAIL LOOP (1.5-mile loop)

Beginning at the parking lot, the White Trail loop heads uphill and cuts across the powerline before heading down toward Jonas Creek. The trail turns left at the mossy opening and runs south for several hundred yards before entering the woods on your left. Look for the white diamond marker at the turn. In the woods, you will pass blueberry bushes and black tupelo trees whose brilliant red leaves are quite a sight in the fall. You will exit the woods on a sandy trail that is the right-of-way for a water pipeline. Follow this trail to your left and travel uphill back to the parking lot.

WHITE TRAIL EXTENSION (3.2 miles out-and-back)

In addition to the 1.5-mile loop, there is also an extension of the White Trail that merges briefly with the Red Trail to cross Jonas Creek. This out-and-back portion of the White Trail utilizes an old fire road and provides access to the western portion of the preserve, including a small right-of-way clearing with a view of Blue Mountain.

RED TRAIL (1.3 miles)

The Red Trail loop offers a way to explore the many seeps that feed into Jonas Creek. The trail runs parallel on both sides of the creek, crossing the creek with the White Trail from the parking lot and again farther north to make a loop. The wetlands are thick with golden ragwort, green false hellebore and spicebush.

YELLOW TRAIL (0.3 miles out and back)

Shortly before the powerline clearing above the parking lot, the Yellow Trail switchbacks up a steep incline to reward hikers with a beautiful vista.

Legend

Points of Interest

- Parking
- Scenic View
- Power Line

Trails

- Red
- White
- Yellow



Scan for online updates:
<https://phlt.org/np-jonas-mountain.html>